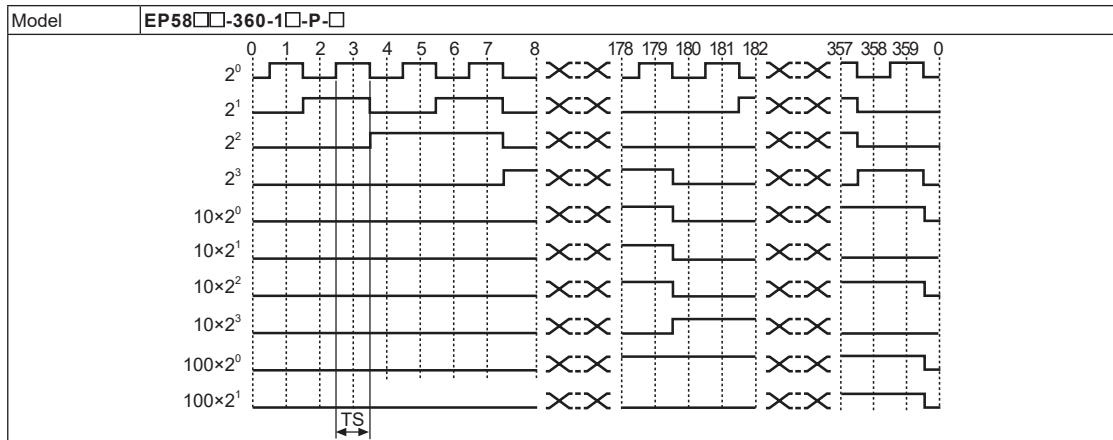


EP58 Series

Output Waveform

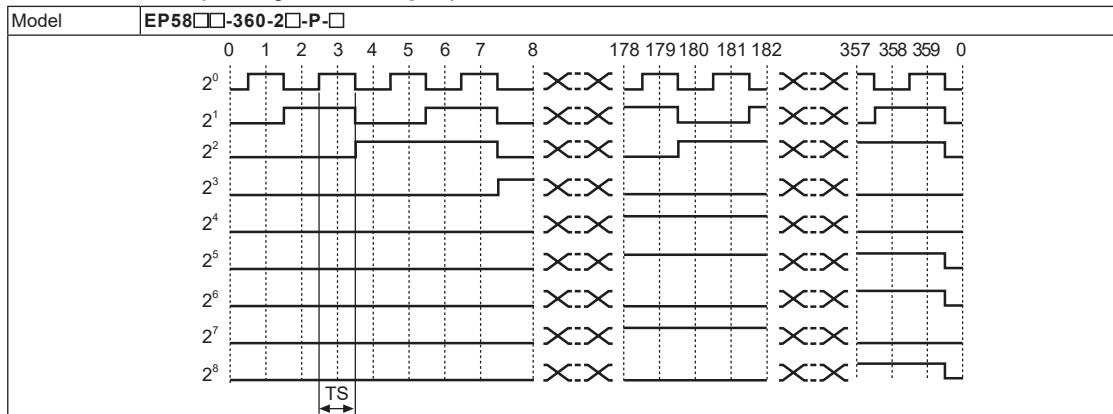
360-division (BCD code output)



※TS=1°±25'

※Above waveform is based on the positive logic. (the output waveform of negative logic is opposite to the above waveform.)

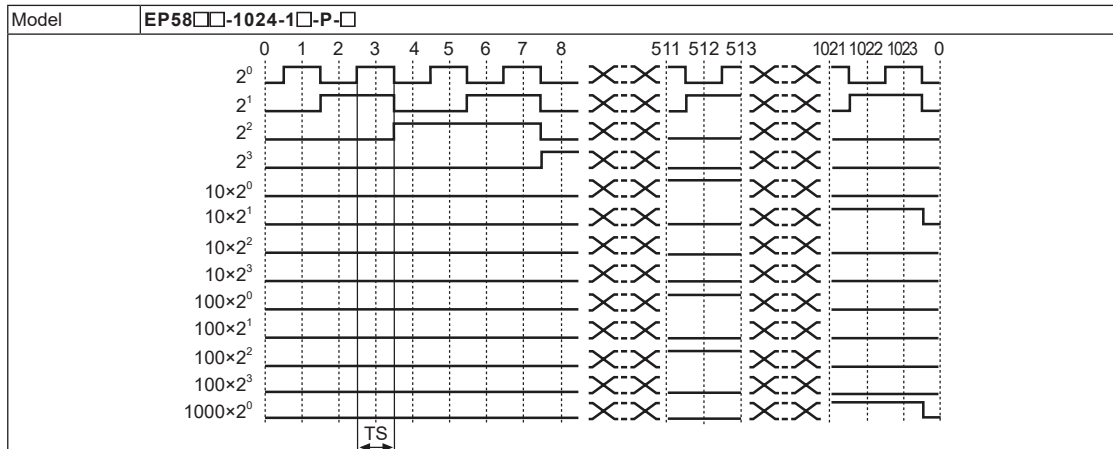
360-division (Binary code output)



※TS=1°±25'

※Above waveform is based on the positive logic. (the output waveform of negative logic is opposite to the above waveform.)

1024-division (BCD code output)



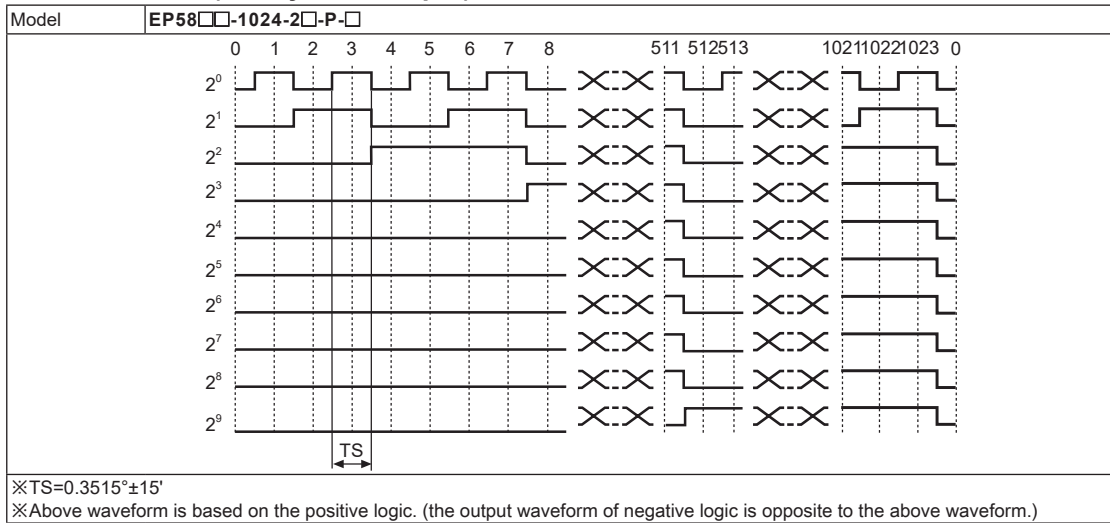
※TS=0.3515°±15'

※Above waveform is based on the positive logic. (the output waveform of negative logic is opposite to the above waveform.)

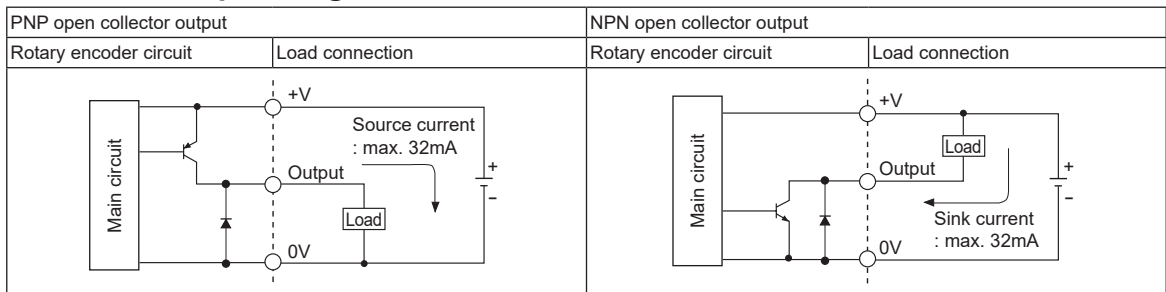
Absolute Ø58mm Single-turn Shaft/Blind Hollow Shaft Type

Output Waveform

1024-division (Binary code output)



Control Output Diagram



※In case of overload or short on output terminal, it may cause output circuit break.

Connections

BCD code

Resolution	45-division	64-division	90-division	128-division	180-division	256-division	360-division	512-division	720-division	1024-division	
Color	White	+V									
Power	Black	GND (0V)									
Output wire	Brown	2^0									
	Red	2^1									
	Orange	2^2									
	Yellow	2^3									
	Blue	$2^0 \times 10$									
	Purple	$2^1 \times 10$									
	Gray	$2^2 \times 10$									
	White/Brown	N C	$2^3 \times 10$								
	White/Red	N C	$2^3 \times 100$								
	White/Orange	N C	$2^1 \times 100$								
White/Yellow	N C	$2^2 \times 100$									
White/Blue	N C									$2^3 \times 100$	
White/Purple	N C	$2^0 \times 1000$									
Shield wire	F.G.										

Binary code / Gray code

Resolution	45-division	64-division	90-division	128-division	180-division	256-division	360-division	512-division	720-division	1024-division	
Color	White	+V									
Power	Black	GND (0V)									
Output wire	Brown	2^0									
	Red	2^1									
	Orange	2^2									
	Yellow	2^3									
	Blue	2									
	Purple	2^5									
	Gray	N-C	2^6								
	White/Brown	N-C									2^7
	White/Red	N-C								2^8	
	White/Orange	N-C							2^9		
White/Yellow	N-C										
White/Blue	N-C										
White/Purple	N-C										
Shield wire	F.G.										

※Unused wires must be insulated.

※Encoder metal case and shield wire must be grounded (F.G.).

※N-C (not connected)

※Output cable must not be short-circuited, because Driver IC is used in output circuit.

※Do not apply tensile strength over 30N to the cable.

SENSORS

CONTROLLERS

MOTION DEVICES

SOFTWARE

(A) Photoelectric Sensors

(B) Fiber Optic Sensors

(C) LIDAR

(D) Door/Area Sensors

(E) Vision Sensors

(F) Proximity Sensors

(G) Pressure Sensors

(H) Rotary Encoders

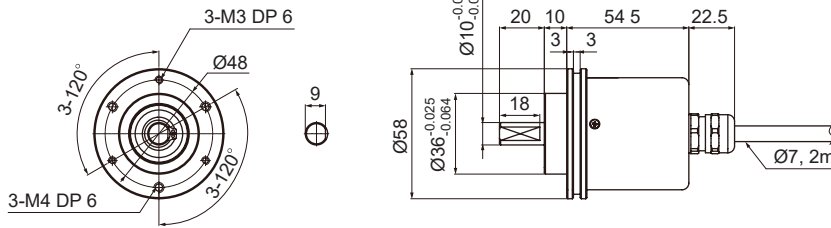
(I) Connectors/ Connector Cables/ Sensor Distribution Boxes/ Sockets

EP58 Series

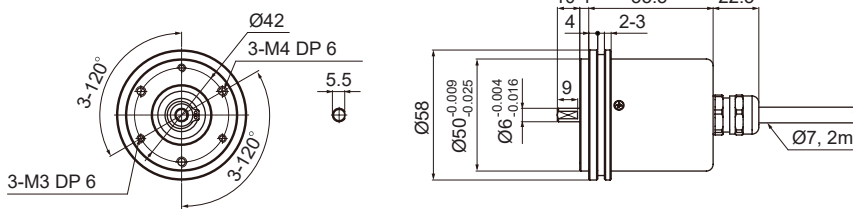
Dimensions

(unit: mm)

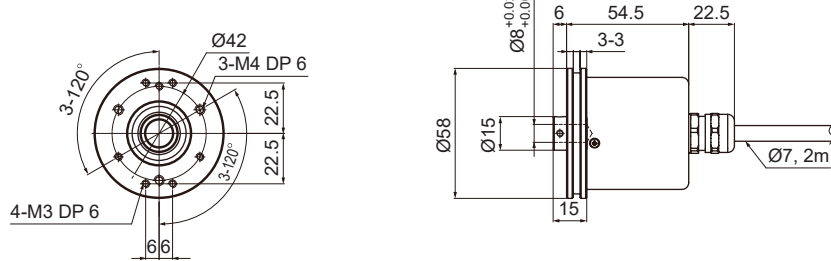
EP58SC10



EP58SS6

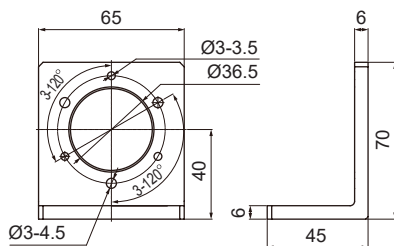
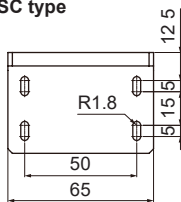


EP58HB8

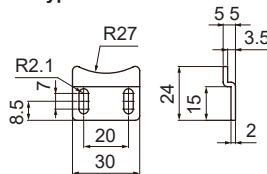


Bracket

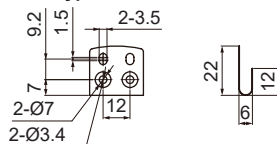
SC type



SS type

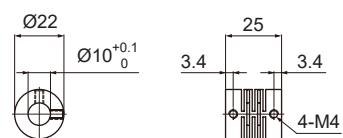


HB type

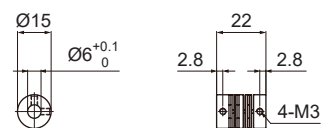


Coupling

EP58SC10



EP58SS6



- Parallel misalignment: max. 0.25mm
- Angular misalignment: max. 5°
- End-play: max. 0.5mm

- ✘ Do not load overweight on the shaft.
- ✘ Do not put strong impact when insert a coupling into shaft.
Failure to follow this instruction may result in product damage.
- ✘ Fix the unit or a coupling by a wrench under 0.15N·m of torque.
- ✘ When you install this unit, if eccentricity and deflection angle are larger, it may shorten the life cycle of this unit.
- ✘ For parallel misalignment, angular misalignment, end-play terms, refer to the "Glossary" section of Technical Description.
- ✘ For flexible coupling (ERB series) information, refer to the ERB series section.